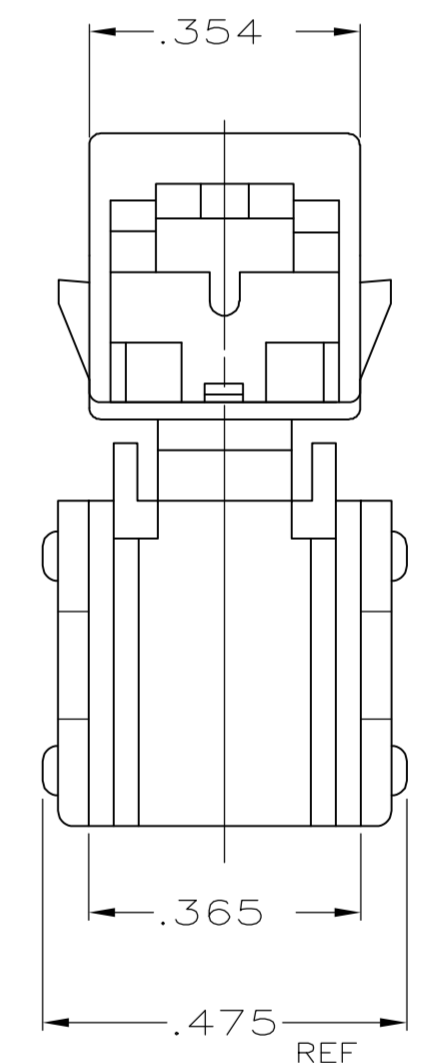
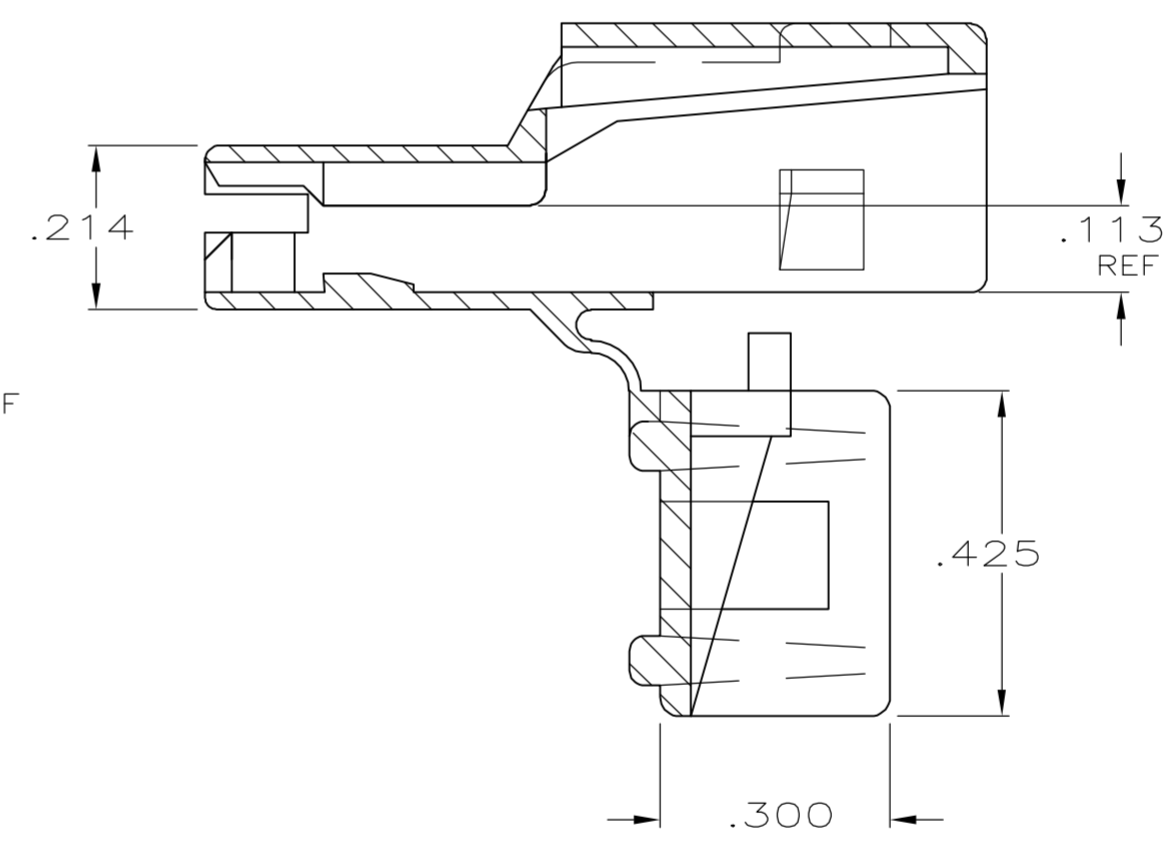
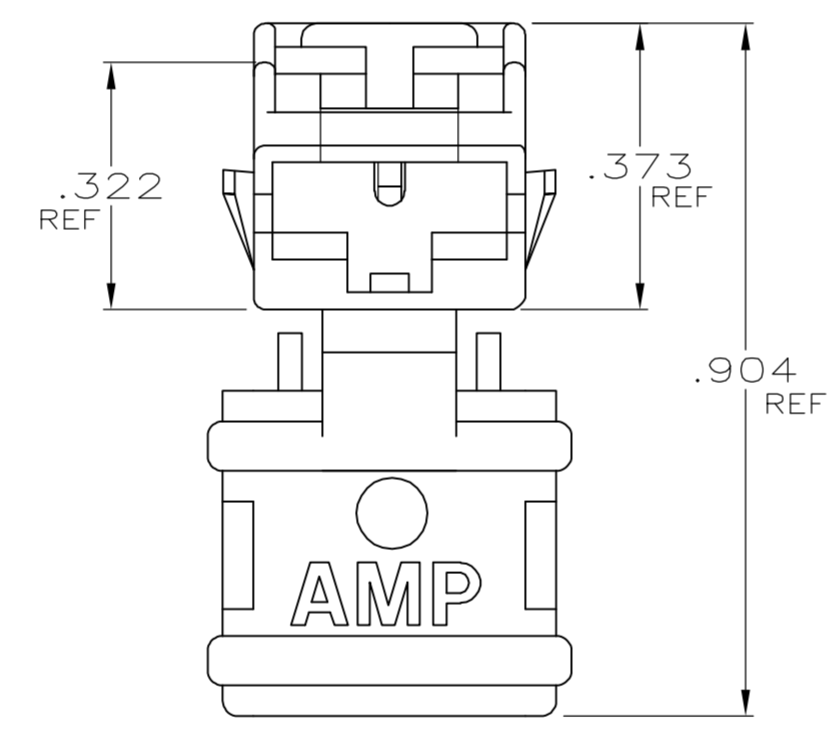
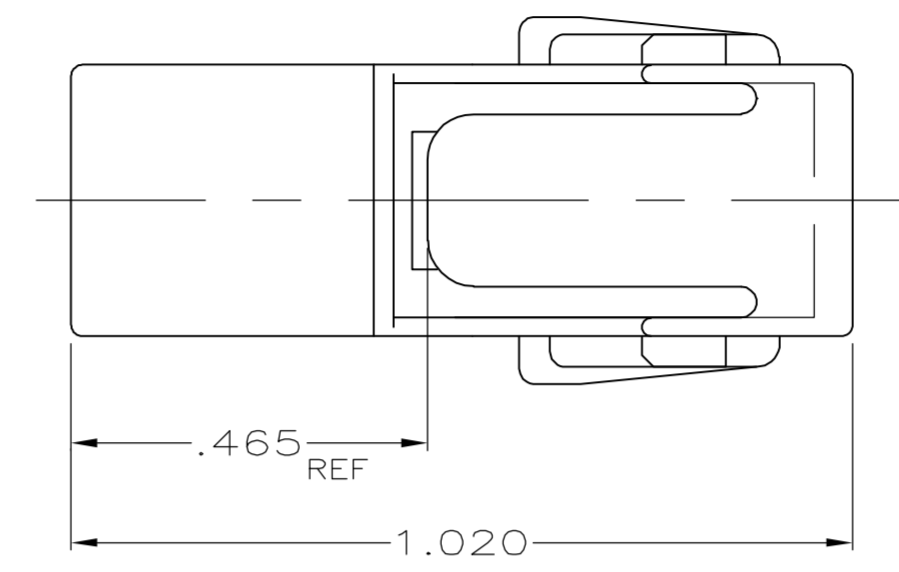
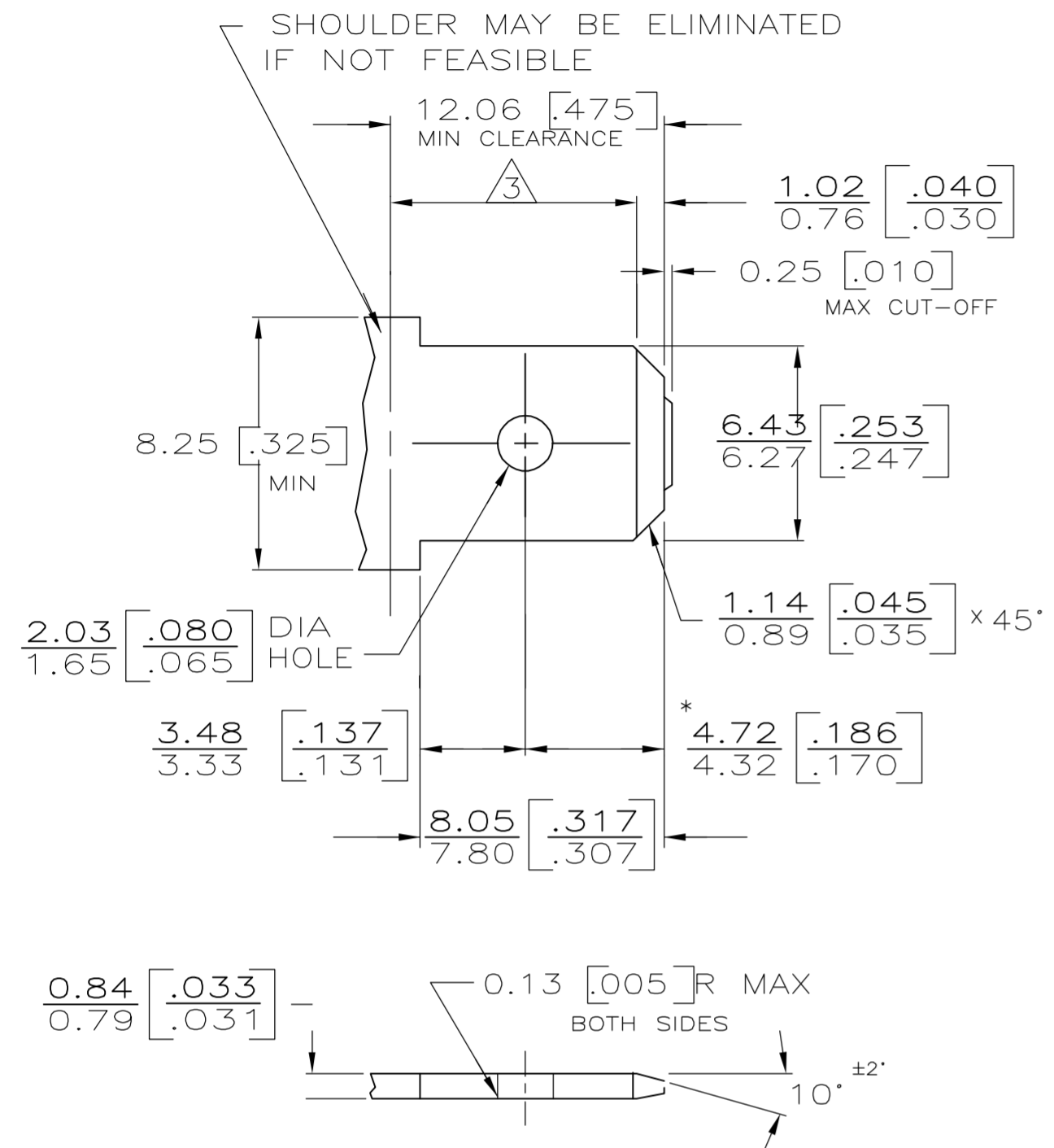


THIS DRAWING IS UNPUBLISHED. RELEASED FOR PUBLICATION
 © COPYRIGHT BY TYCO ELECTRONICS CORPORATION. ALL RIGHTS RESERVED.

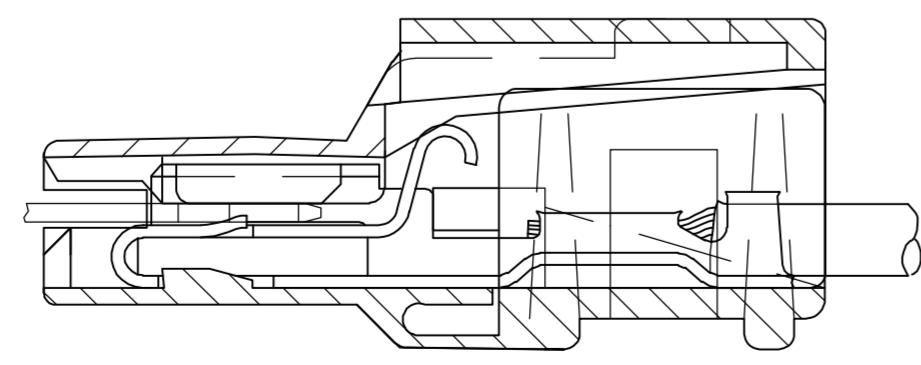
LOC	DIST	REVISIONS			
P	LTR	DESCRIPTION	DATE	DWN	APVD
AF	50	R1	REV PER ECR 06-000652	17JAN06	JR ED

SUGGESTED MATING TAB

PRELIMINARY - NOT FOR PRODUCTION



- 1 - MATL: 1/2H BRASS OR NICKEL PL STEEL.
- 2 - NO BURRS PERMISSIBLE AT HOLE.
- 3 - MUST BE FLAT WITHIN 0.076 [.003] OVER THIS LENGTH.
- 4 - TIN PLATING IS REQUIRED ON BRASS WHEN TERMINAL TEMP. IS OVER 225° F.
- 5 - HOLE MUST BE SYMMETRICAL ABOUT TAB Q WITHIN 0.076 [.003]
- * TO BE USED ONLY WHEN SHOULDER IS ELIMINATED.



ASSEMBLY VIEW

FINISH- COLOR	MATERIAL	PART NO
BLACK	4/6 NYLON, V2	1 520961-4
NATURAL	6/6 NYLON, V2	520961-3
NATURAL	66/6 NYLON, V0	1 520961-2
BLACK	6/6 NYLON, V2	520961-1

THIS DRAWING IS A CONTROLLED DOCUMENT.		DWN JR RUTH 1/5/89	Tyco Electronics Corporation Harrisburg, PA 17105-3608
DIMENSIONS: INCHES		CHK MS FEHER 1/5/89	
TOLERANCES UNLESS OTHERWISE SPECIFIED:		APVD J GILLESPIE 3/7/89	
0 PLC ± - 1 PLC ± - 2 PLC ± - 3 PLC ± .010 4 PLC ± - ANGLES ± - FINISH SEE TABLE		NAME HOUSING, POSITIVE-LOCK, .250 SERIES, MK I PRODUCT SPEC - APPLICATION SPEC - WEIGHT - CUSTOMER DRAWING	
MATERIAL SEE TABLE	WEIGHT -	SIZE A2	CAGE CODE 00779
SCALE 4:1		SHEET 1 of 1	REV R1